



# REPUBLIKA HRVATSKA

## Ministarstvo gospodarstva

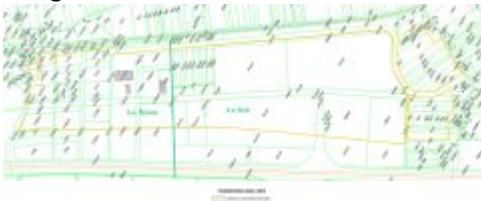
### Business Zone Križ I

#### General information

Location (city/municipality)	Municipality of Križ
Zone type	Business zone
Size of the zone (m <sup>2</sup> )	1.260.000
Available land size (m <sup>2</sup> )	550.000
Construction purpose	Manufacturing and services
Allowed construction density	0,6
Construction efficiency coefficient allowed	0,8
Allowed construction height (m)	25
Allowed noise level (at the border of the site, dB)	-

#### Zone diagrams & plans

Diagram of the zone



Scanned copy of cadastral plan extract with highlighted available lots



#### Infrastructure/energents capacity

## Gas

Availability Yes

## Electricity

Availability Yes

## Water

Availability Yes

## Sewage

Availability Yes

Water purifier Yes

## Communal information

### Communal contribution fee

Communal contribution for manufacturing (EUR/m<sup>3</sup>) 4

Communal contribution for office spaces (EUR\*/m<sup>3</sup>) 8

Communal contribution for services (EUR\*/m<sup>3</sup>) 8

Redemption from paying communal contribution fee Yes, by the Decision of the Municipal Council

### Communal contribution tax

Amount of communal contribution tax (EUR\*/m<sup>2</sup>) 0,4

Redemption from paying communal contribution tax Yes, in the 1st year of business fully, in the 2nd year of business 50% exemption

### Water contribution

Water contribution for business buildings (EUR\*/m<sup>3</sup>)

Water contribution for manufacturing buildings (EUR\*/m<sup>3</sup>)

## Water contribution

### Water contribution for open-space business buildings (EUR\*/m<sup>2</sup>)

## Water fee

**Water regulation fee (EUR\*/m<sup>2</sup>)** 0.14 for trade and services, 0.04 for production activities

## Physical plans

<b>County urban plan</b>	Yes
<b>Municipal/City urban plan</b>	Yes
<b>Urban development plan</b>	No obligation
<b>Detailed urban plan</b>	No obligation

## Distances from traffic infrastructure

<b>Road</b>	km
<b>Highway</b>	A3, The zone is next to the exit to the A3 highway km
<b>Railway siding</b>	1 km
<b>Sea port</b>	Rijeka, 180 km
<b>Airport</b>	Airport "Franjo Tuđman" Zagreb, 40 km

## Companies in the zone

<b>Company name</b>	<b>Activity</b>	<b>Country of origin</b>	<b>Parent company</b>	<b>Company website</b>
MG DIZAJN	Stone production and processing	Republic of Croatia	LINEA MARMO SpA, Italija	
AGROMAIS	Agricultural equipment	Republic of Croatia		<a href="https://agromais.hr/">https://agromais.hr/</a>
PLETER VATROMETI	Fireworks	Republic of Croatia		<a href="https://www.pletervatrometi.hr/">https://www.pletervatrometi.hr/</a>

Company name	Activity	Country of origin	Parent company	Company website
MIAGRA	Agricultural products and equipment	Republic of Croatia		<a href="https://miagra.hr/">https://miagra.hr/</a>
LIDL HRVATSKA Ltd.	Logistics and distribution center	Republic of Croatia		<a href="https://www.lidl.hr/">https://www.lidl.hr/</a>
JABUKA LDC Ltd.	Logistics and distribution center	Republic of Croatia	JABUKA PRO d.o.o. PZ JabukaHR	<a href="https://www.jabuka.hr/">https://www.jabuka.hr/</a>

## Gallery

\* average rate = 7.54

Ministry of Economy no legal responsibility for the accuracy or comprehensiveness of the data supplied in this database. Ministry of Economy accepts no liability for any direct, indirect, consequential or incidental damages or losses arising from use of the data collection.