



# REPUBLIKA HRVATSKA

## Ministarstvo gospodarstva

### Business Zone Rakitka 1 (Pitomača)

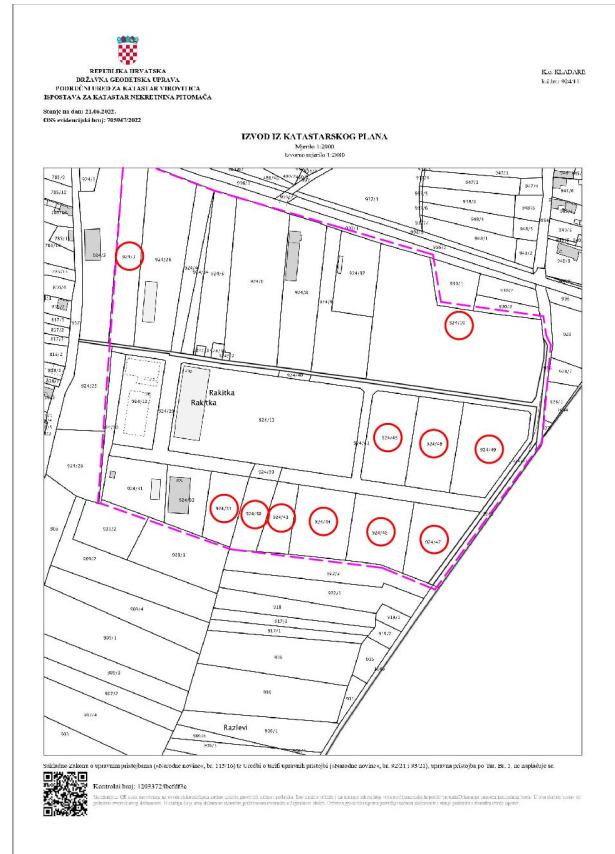
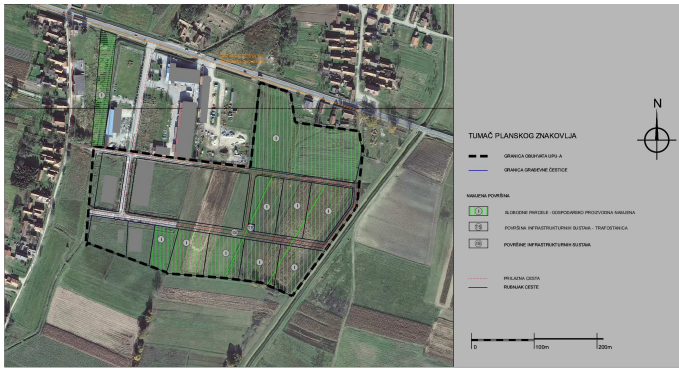
#### General information

Location (city/municipality)	Municipality of Pitomača
Zone type	Business zone
Size of the zone (m <sup>2</sup> )	128.554
Available land size (m <sup>2</sup> )	52.209
Construction purpose	Manufacturing and services
Allowed construction density	0,7
Construction efficiency coefficient allowed	1,75
Allowed construction height (m)	12.00 * for certain parts of buildings or buildings, a higher height is possible (e.g. silos, water towers or the like), when this is necessary due to the activity carried out in them
Allowed noise level (at the border of the site, dB)	-

#### Zone diagrams & plans

Diagram of the zone

Scanned copy of cadastral plan extract with highlighted available lots



## Infrastructure/energents capacity

### Gas

Availability Yes

### Electricity

Availability Yes

### Water

Availability Yes

### Sewage

Availability Yes

Water purifier Yes

## Communal information

## Communal contribution fee

<b>Communal contribution for manufacturing (EUR/m<sup>3</sup>)</b>	0,42
--	------

<b>Communal contribution for office spaces (EUR*/m<sup>3</sup>)</b>	0,77
---	------

<b>Communal contribution for services (EUR*/m<sup>3</sup>)</b>	0,77
--	------

<b>Redemption from paying communal contribution fee</b>	Yes
---	-----

## Communal contribution tax

<b>Amount of communal contribution tax (EUR*/m<sup>2</sup>)</b>	0,11 - 0,17
---	-------------

<b>Redemption from paying communal contribution tax</b>	Yes, under certain conditions
---	-------------------------------

## Water contribution

<b>Water contribution for business buildings (EUR*/m<sup>3</sup>)</b>	0,67
---	------

<b>Water contribution for manufacturing buildings (EUR*/m<sup>3</sup>)</b>	0,12
--	------

<b>Water contribution for open-space business buildings (EUR*/m<sup>2</sup>)</b>	0,2
--	-----

## Water fee

Water regulation fee (EUR\*/m<sup>2</sup>)

## Physical plans

<b>County urban plan</b>	Yes
--------------------------	-----

<b>Municipal/City urban plan</b>	Yes
----------------------------------	-----

<b>Urban development plan</b>	Created
-------------------------------	---------

<b>Detailed urban plan</b>	No obligation
----------------------------	---------------

## Distances from traffic infrastructure

<b>Road</b>	0,1 km
<b>Highway</b>	A4, 74 km
<b>Railway siding</b>	4,5 km
<b>Sea port</b>	Rijeka , 284 km
<b>Airport</b>	Zagreb International Airport – Franjo Tuđman, 121 km

## Companies in the zone

Company name	Activity	Country of origin	Parent company	Company website
KLESAR“	Making tombstones	Republic of Croatia		
ALUMONTAŽA PITOMAČA d.o.o. za proizvodnju i usluge	Production of metal doors and windows	Republic of Croatia		<a href="https://www.alumontaza-pitomaca.hr/">https://www.alumontaza-pitomaca.hr/</a>
HERBARIUM d.o.o. za trgovinu, proizvodnju i usluge	Processing of tea and coffee	Italian Republic	SPIDER GRUPA d.o.o. za proizvodnju, trgovinu i usluge, EVERTON S.P.A., Italija	
KOGRAD građevinarstvo i usluge d.o.o.	Construction of other civil engineering buildings	Republic of Croatia		<a href="http://kograd.hr/">http://kograd.hr/</a>
KOGRAD, obrt za graditeljstvo, transport i usluge	Construction, services and transport	Republic of Croatia		
BOSS METAL, j.d.o.o. za trgovinu i usluge	Collection of non-hazardous waste	Republic of Croatia		
ALU VITRUM d.o.o. za trgovinu i usluge	Non-specialized wholesale trade	Republic of Croatia		<a href="https://aluvitrum.hr/">https://aluvitrum.hr/</a>

Company name	Activity	Country of origin	Parent company	Company website
KOMUNALNO PITOMAČA društvo s ograničenom odgovornošću za opskrbu vodom, plinom te održavanje tržnica, groblja i javnih površina, trgovina na veliko i malo i niskogradnja	Waste collection, waste processing and disposal activities; material recovery	Republic of Croatia	Pitomača municipality	<a href="https://komunalno-pitomaca.hr/">https://komunalno-pitomaca.hr/</a>
BUSINESS INCUBATOR OF VIROVITICA_PODRAVINA COUNTY		Republic of Croatia	Virovitica-Podravina County	<a href="https://inkubatorivpz.hr/">https://inkubatorivpz.hr/</a>

## Gallery

\* average rate = 7.54

Ministry of Economy no legal responsibility for the accuracy or comprehensiveness of the data supplied in this database. Ministry of Economy accepts no liability for any direct, indirect, consequential or incidental damages or losses arising from use of the data collection.