



REPUBLIKA HRVATSKA

Ministarstvo gospodarstva

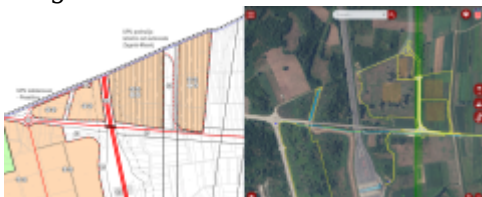
Jablanovec Economic Zone (Zaprešić)

General information

Location (city/municipality)	Zaprešić / Jablanovec
Zone type	Business zone
Size of the zone (m ²)	240.000
Available land size (m ²)	240.000
Construction purpose	Manufacturing and services
Allowed construction density	0,6
Construction efficiency coefficient allowed	production purpose: 2.0, business purpose: 2.4
Allowed construction height (m)	- production: max. 4 above-ground floors or max. 15 m from the ground to the cornice, exceptionally if the technological process requires it, up to 50% of the total floor plan area can be higher (chimneys, silos) - commercial: max. 4 above-ground floors or max. 15 m from the ground to the wreath
Allowed noise level (at the border of the site, dB)	Not foreseen in physical plans

Zone diagrams & plans

Diagram of the zone



Scanned copy of cadastral plan extract with highlighted available lots



Infrastructure/energents capacity

Gas	
Availability	Yes
Electricity	
Availability	Yes
Water	
Availability	Yes
Sewage	
Availability	Yes
Water purifier	Yes

Communal information

Communal contribution fee	
Communal contribution for manufacturing (EUR/m³)	18.00€/m ³ (Zone I - between the Krapina River and the highway) 15.00€/m ³ (Zone II east of the highway)
Communal contribution for office spaces (EUR*/m³)	18.00€/m ³ (Zone I - between the Krapina River and the highway) 15.00€/m ³ (Zone II east of the highway)
Communal contribution for services (EUR*/m³)	18.00€/m ³ (Zone I - between the Krapina River and the highway) 15.00€/m ³ (Zone II east of the highway)
Redemption from paying communal contribution fee	Yes, - 10% discount on one-time payment

Communal contribution tax

Amount of communal contribution tax (EUR*/m²)	0.26 for manufacturing activities 0.45 for other activities
Redemption from paying communal contribution tax	No

Water contribution

Water contribution for business buildings (EUR*/m³)

Water contribution for manufacturing buildings (EUR*/m³)

Water contribution for open-space business buildings (EUR*/m²)

Water fee

Water regulation fee (EUR*/m²)	0.13 for trade and services, 0.03 for manufacturing activities
--	--

Physical plans

County urban plan	Yes
Municipal/City urban plan	Yes
Urban development plan	Created
Detailed urban plan	Created

Distances from traffic infrastructure

Road	D1 - 0,0 km
Highway	A2, 1 km
Railway siding	1 km
Sea port	Port of Rijeka, 127 km
Airport	Franjo Tuđman Airport Zagreb, 127 km

* average rate = 7.54

Ministry of Economy no legal responsibility for the accuracy or comprehensiveness of the data

supplied in this database. Ministry of Economy accepts no liability for any direct, indirect, consequential or incidental damages or losses arising from use of the data collection.